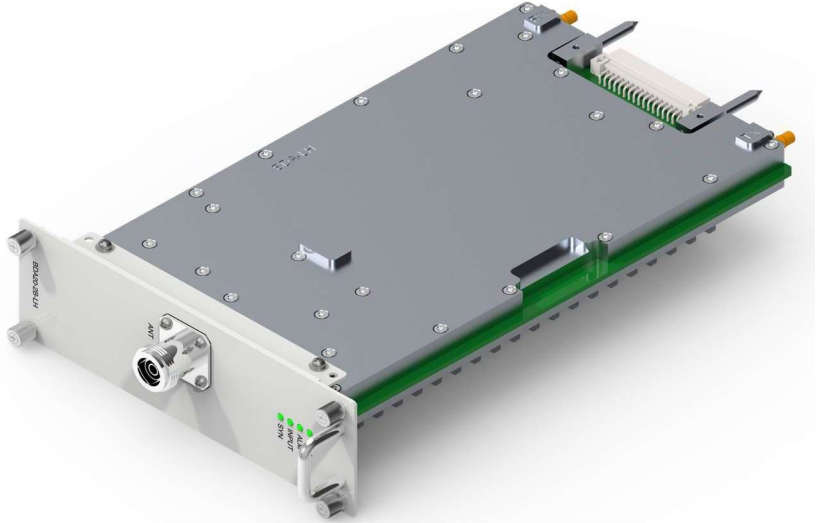


## MU-BDA20-2B-LH

### ComFlex NG Series Distributed Antenna System

#### Features

- Self-Commissioning
- Supports 2 off-air channels
- Multi-Band ; Multi-Operator
- 4.3-10 RF Connector



#### Product Description

The ComFlex NG series Bi-Directional Amplifier (BDA) cards enable FCC part 20 off-air coverage. This channelized BDA card supports up to two channels per BDA card. The Master Unit supports up to 8 BDA cards and 16 off-air channels.

## Specifications

General		
Categories		ComFlex NG, Enterprise Wireless Communications
MBTF @ 40° C	H	50,000

Mechanical		
Donor Antenna Connector		4.3-10 Female
Dimensions, H x W x D	in.	6.9" x 2.1" x 9.7"
Weight	lbs.	4.2
Packed Dimensions, H x W x D	in.	15.7" x 13" x 6.7"
Packed Weight	lbs.	6

Electrical		700MHz SMH	850MHz CELL	1900MHz PCS	2100MHz EAWS
Uplink Frequency Range	MHz	698-716 777-787	824-849	1850-1910	1710-1755
Downlink Frequency Range		728-756	869-894	1930-1990	2110-2155
Operating Bandwidth	MHz	28	25	60	45
Uplink Output Power	dBm	19	19	19	19
Uplink Maximum Gain	dB	80			
Downlink Input Range	dBm	-95 to -55 (RSRP)			
Downlink Maximum Gain	dB	80			
Downlink Max Input Power	dBm	-10			
ATT Adjustable Range (1dB step)	dB	0-30			
System Delay (BDA Card)	μsec	≤ 10			
VSWR		≤ 1.8			
Input Power Voltage Internal from subrack	VDC	12			
Power Consumption (max)	W	45			

Environmental		
Operating Temperature	°F	+32 to +113
Operating Humidity		≤ 85%
Ingress protection		IP30
Heat Dissipation	BTU / h	153.45

Certifications

Master Unit	
UL Certification	UL 62368-1
FCC Certification	PX8CFNG-MUc

Ordering Information

	P/N	Description
Master Unit	MU-BDA20-2B-LH	Master Unit BDA Card - Part 20 Consumer Capable. 2 Channels - One low band (700/850) and one high band (1900/2100)