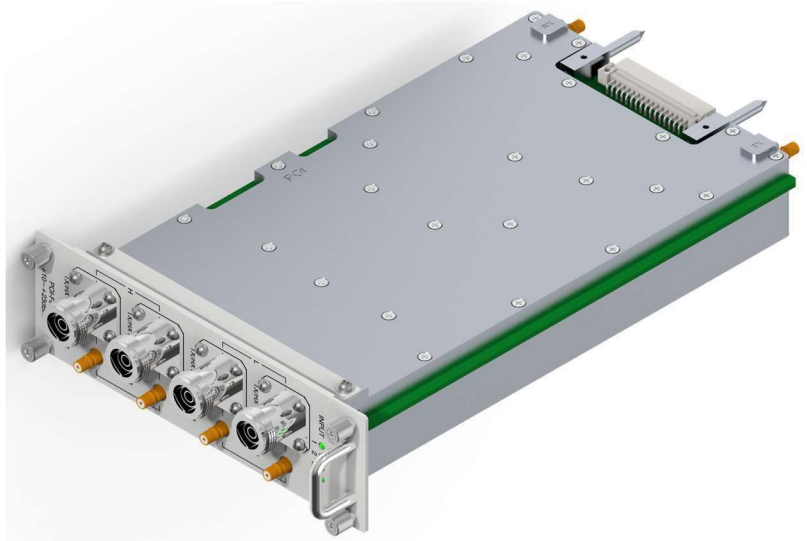


MU-POI-HP-2500TDD Specifications

ComFlex NG Series Distributed Antenna System

Features

- Multi-Channel
- Assisted-Commissioning
- 4 RF Inputs for 2500
- Simplex and Duplex Support
- 32 RF Inputs max per Sector
- Automatic TDD Synchronization
- 194MHz Instantaneous Bandwidth
- 4.3-10 RF Connector



Product Description

The ComFlex NG series Point of Interface (POI) cards offers a modular solution scalable to meet the exact capacity needs of your enterprise or campus. The Band 41 BRS TDD POI variant passes a full 194MHz IBW. With a total of 8 POI cards, each ComFlex Master Unit can support up to 32 RF Inputs per sector. The installer can use assisted commissioning or calibrate manually the downlink and uplink transmission levels across the DAS. Along with automatic TDD synchronization, the TDD POI is easy to install and commission.

General		
Categories		ComFlex NG, Enterprise Wireless Communications
MBTF @ 40° C	H	50,000

Mechanical		
Duplex BTS RF Connector		4.3-10 Female
Simplex UL RF Connector		QMA Female
Dimensions, H x W x D	in.	6.9" x 2.1" x 9.7"
Weight	lbs.	4
Packed Dimensions, H x W x D	in.	15.7" x 13" x 6.7"
Packed Weight	lbs.	5.5

Electrical			
			2500MHz BRS
Uplink Frequency Range	MHz		2496-2690
Downlink Frequency Range			2496-2690
Operating Bandwidth	MHz		194
Uplink Output Power	High Power POI	dBm	0
Uplink Maximum Gain	High Power POI	dB	+20 to +37
Downlink Input Range	High Power POI	dBm	0
Downlink Maximum Gain	High Power POI	dB	37
Downlink Max Input Power	High Power POI	dBm	0
ATT Adjustable Range (1dB step)		dB	0-30
System Delay (POI Card)		μsec	≤ 3
VSWR			≤ 1.8
PIM @ 2×20dBm (max)		dBc	-150dBc
Input Power Voltage Internal from subrack		VDC	12
Power Consumption (max)		W	1.2

Environmental		
Operating Temperature	°F	+32 to +113
Operating Humidity		≤ 85%
Ingress protection		IP30
Heat Dissipation	BTU / h	4.092

Certifications

Master Unit	
UL Certification	UL 62368-1
FCC Certification	PX8CFNG-MUc

Ordering Information

	P/N	Description
Master Unit	MU-POI-HP-2500TDD	Master Unit POI Card - 4 Ports, 2500 TDD (2496-2690 MHz), 20-37dBm Input