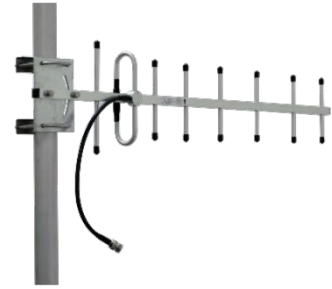


Outdoor Directional Yagi Antenna

OY-MN-V11P

746-896MHz, N-Female

- Covering 746-896MHz Public Safety Band
- Narrow beamwidth and High gain with 8 elements
- Suitable for donor antenna and aluminum finished
- Supporting antenna tilt adjustment



Electrical Specification

Product Model	OY-MN-V11P
Frequency (MHz)	746-896
Gain (dBi)	11.2
Polarization	Linear / Preinstalled with Vertical Pol.
Beamwidth Horizontal (°)	48
Beamwidth Vertical (°)	40
VSWR	≤ 1.5
Front to Back Ratio (dB)	≥ 15
Average Power, max (W)	100
Impedance (ohm)	50

Mechanical Specification

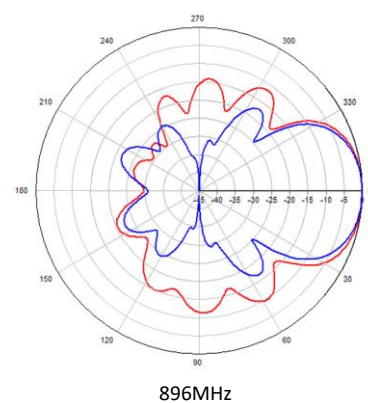
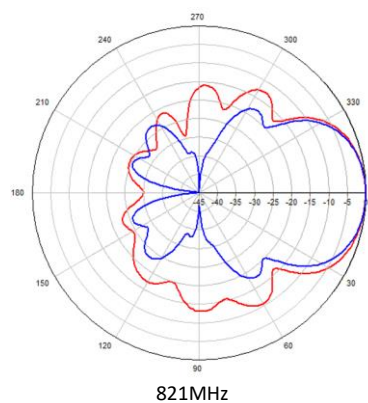
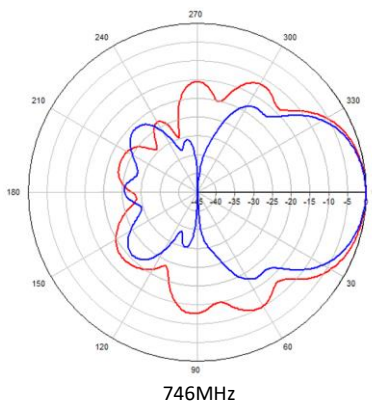
Dimension Diameter, height (in/mm)	33.5 x 7.5 x 2.0 / 850 x 190 x 50
Weight (lb./kg)	0.9 / 0.4
Shipping Dimension(in/mm)	35.6 x 9.1 x 2.4 / 905 x 230 x 60
Shipping Weight(lb./kg)	1.8 / 0.7
Radome Material & color	Aluminum finished, White
Diameter of the pole mounting pole (in/mm)	∅ 1.57-2.00 / ∅40-50
Antenna Tilt adjustment (°)	± 30° max
Maximum Wind Speed(mph)	186
Connector type	N-Female

Environment & Compliance

Application	Outdoor
Operating Temperature	-40°C to +60°C
Relative Humidity	Up to 95%
RoHS	Compliant
Environment	
Lightening protection	Direct Grounding

Antenna Pattern

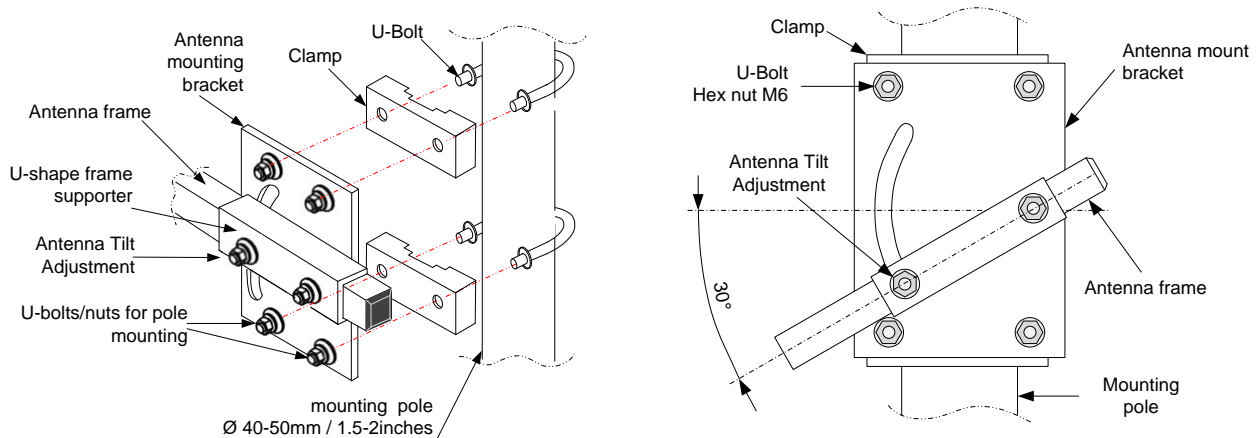
— Horizontal — Vertical



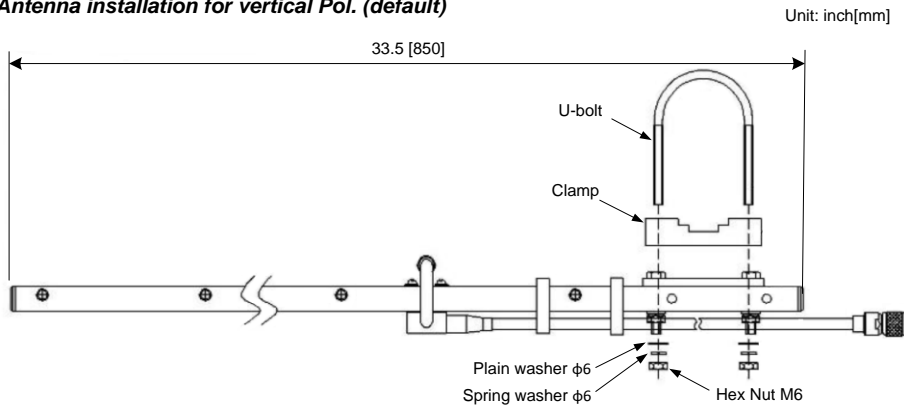
Mechanical Drawing and Installation Guide

Installation Instruction

- A. The antenna bracket and the antenna frame are pre-assembled for vertical polarization(default)
- B. Put the antenna bracket and the mounting pole according to the position and direction shown in the drawing
- C. Fasten two U-bolts and clamps the antenna bracket to the mounting pole. (not included)
- D. Adjust antenna tilt angle (max $\pm 30^\circ$) and fasten the nut (HEX M6)
- E. Connect the equipment and antenna with their respective connectors
- F. Ensure that all connections are waterproof
- G. Fasten the cables of the antenna and equipment



Antenna installation for vertical Pol. (default)



Optional installation - Horizontal Pol.

