

Wideband Power Splitter

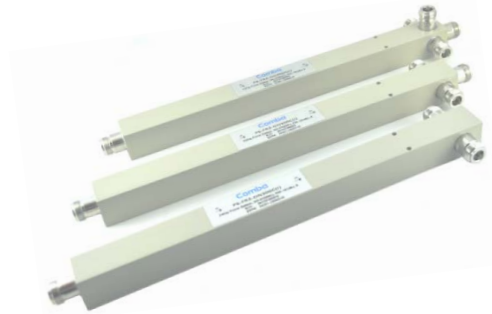
PS-FR2-ON300C(I)

PS-FR3-ON300C(I)

PS-FR4-ON300C(I)

2/3/4 Way, Low PIM(-161dBc), 340-2700MHz, N Female, 300W

- Reactive type power splitter
- Wideband design covering 340-2700MHz
 - Public Safety Band (UHF & 700/800MHz), up to 2.7GHz
- Suitable for indoor/outdoor environment
- High reliability and low insertion loss



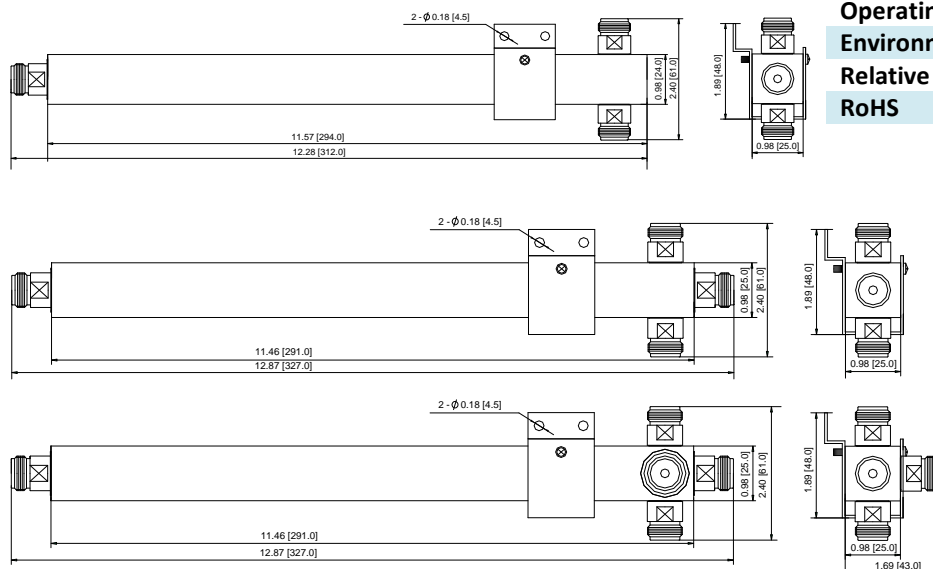
Electrical Specification

Product Model	PS-FR2-ON300C(I)	PS-FR3-ON300C(I)	PS-FR4-ON300C(I)
	2-Way	3-Way	4-Way
Frequency (MHz)		340-2700	
Split Loss (dB)	3.0	4.8	6.0
Insertion Loss (dB)	≤ 0.25	≤ 0.35	≤ 0.40
VSWR @ input port	≤ 1.25	≤ 1.25	≤ 1.30
PIM (dBc)		≤ -161 @ 2 x 43dBm	
Average Power, max (W)		300	
Peak Power, max (W)		1000	
Impedance (ohm)		50	

Mechanical Specification

Dimension (in/mm)	12.28x2.40x0.98 / 312.0x61.0x25.0	12.87x2.40x0.98 / 327.0x61.0x25.0	12.87x2.40x1.69 / 327.0x61.0x43.0
Weight (lb/kg)	1.19 / 0.54	1.25 / 0.57	1.31 / 0.60
Connector Type	N Female	N Female	N Female

Outline Drawing



Environment & Compliance

Application	Indoor / Outdoor
Operating Temperature	-35°C to +85°C
Environment	IP65
Relative Humidity	Up to 100%
RoHS	Compliant